

The WHITTREDGE 2000

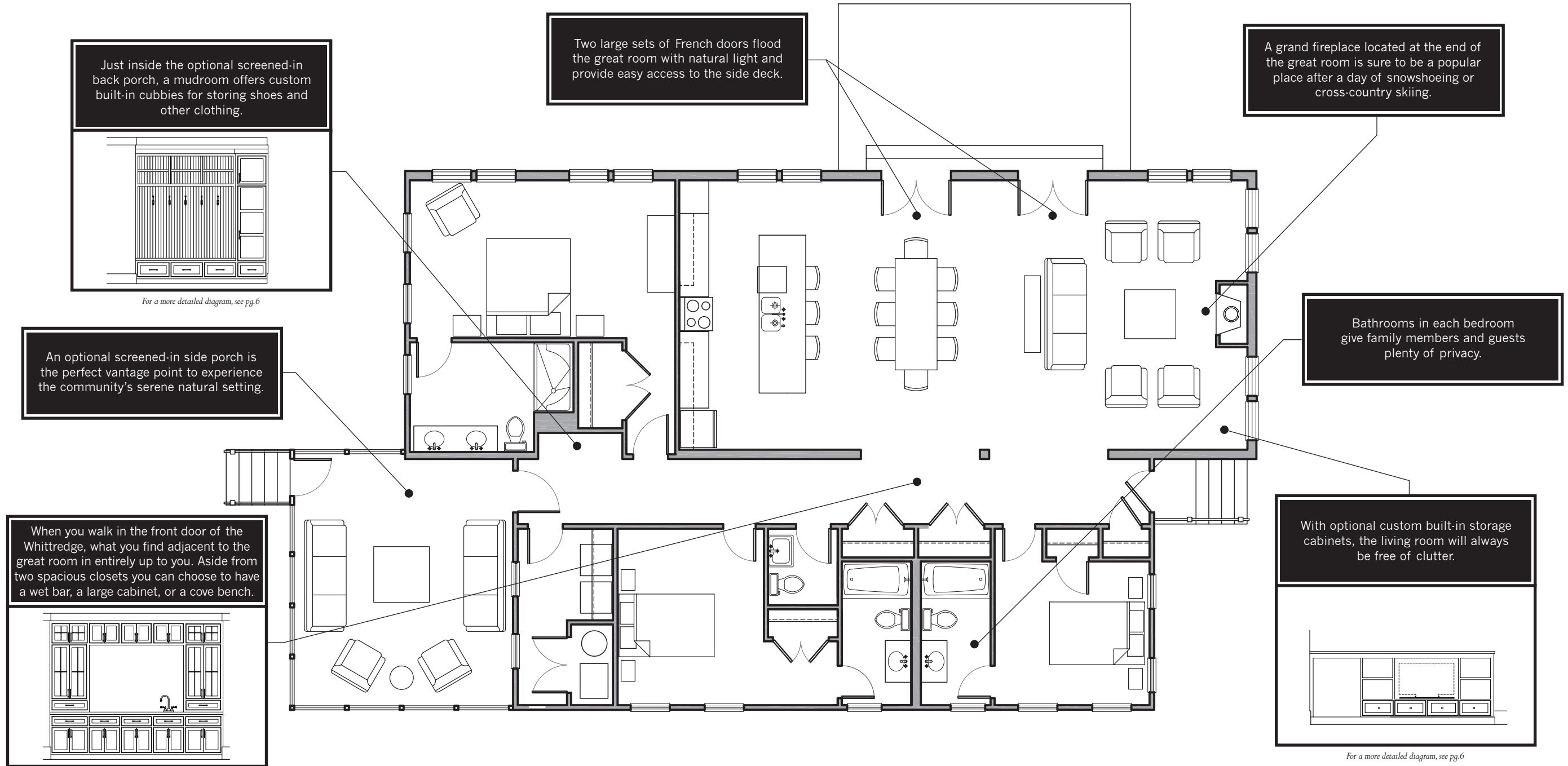
*2,090 Total Square Feet
3 Bedrooms, 3½ Bathrooms*



The Lakeside Village of Byron



The WHITTREDGE 2000



First Floor Plan – 2,090 SF

Walk in the front door of the Whittredge and you are immediately taken by the size and detail of the great room. Massive wooden beams soar along the ceiling above. Dual French doors pull in the late afternoon sun. And a grand fireplace conjures images of cozy winter nights. Despite its contemporary layout, the room's classic touches make

the Whittredge feel like it has been in the family for years. Surrounding the great room are a master bedroom with full bath, and two additional bedrooms also with full baths, making the Whittredge a perfect choice for couples that have older kids or frequent guests. Not to mention the convenience of having everything on one floor.

The Lakeside Village of Byron

The WHITTREDGE 2000



Front Elevation



Back Elevation

Exterior Elevation

The Whittredge definitely isn't lacking in old-fashioned charm. The façade inspires notions of a historic barn, complete with a lean-to and sliding barn doors. The exterior proportions are deceiving in that the home appears to be two stories, but, in fact, the Whittredge is the only ranch home found in The Lakeside Village of Byron.

The Lakeside Village of Byron

The WHITTREDGE 2000



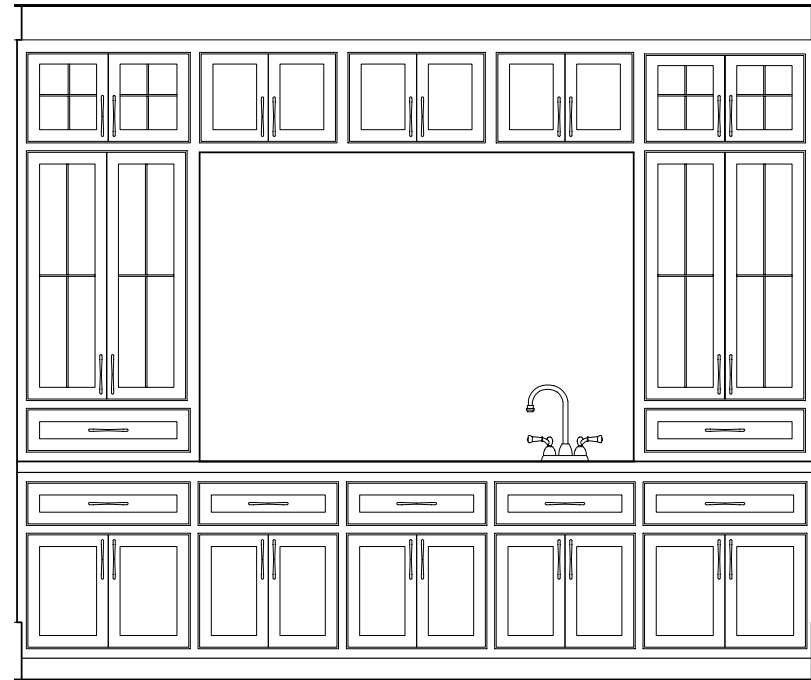
Right Elevation



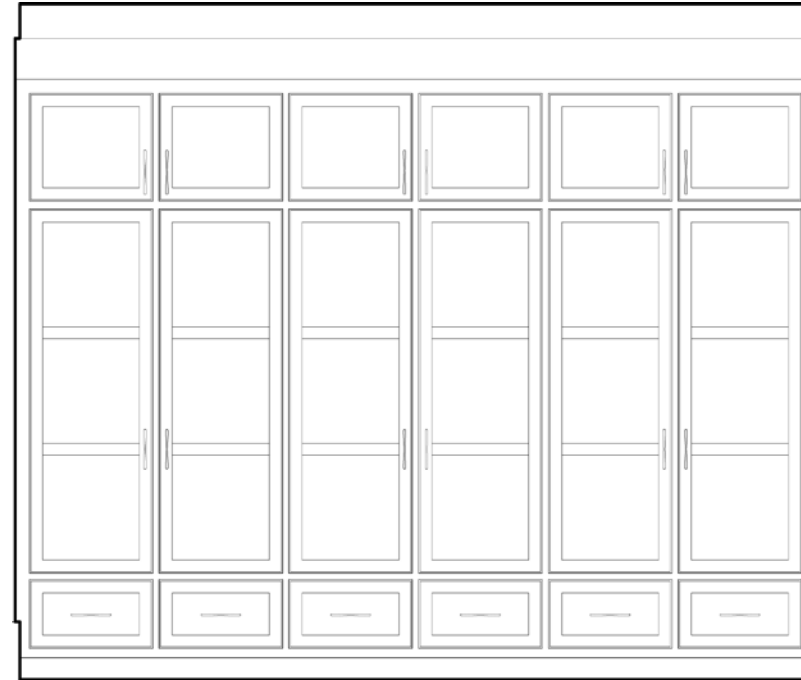
Left Elevation

The Lakeside Village of Byron

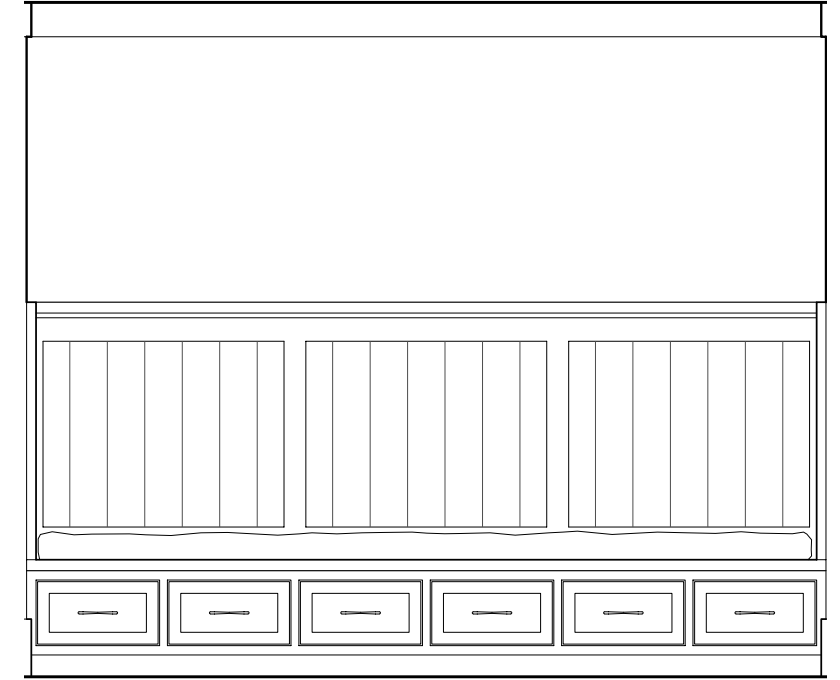
The WHITTREDGE 2000



Wet Bar - Elevation

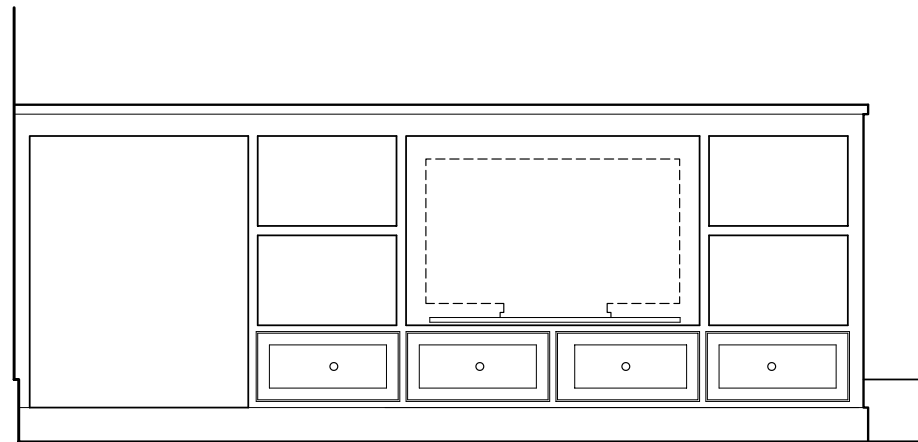


Cabinet - Elevation

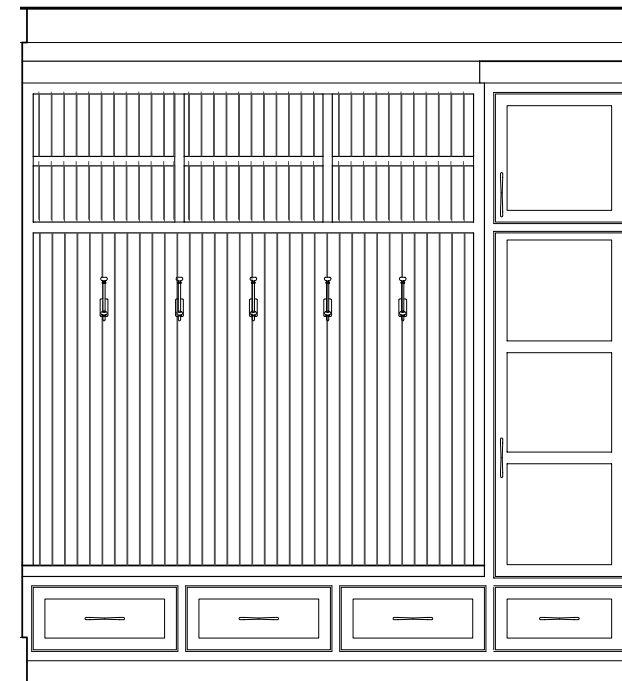


Cove Bench - Elevation

The WHITTREDGE 2000



Living Room T.V. Cabinet - Elevation



Rear Entry Built-In - Elevation

DESIGN TEAM

Builder

Byron Extraordinary Place, LLC. – Indianapolis, IN

Architectural & Design Direction

Soucie Horner, Ltd. – Chicago, IL

Planning

David Oliver – Poundbury, England

Landscape Architecture

Catharina Malmberg – London, England



www.VillageofByron.com