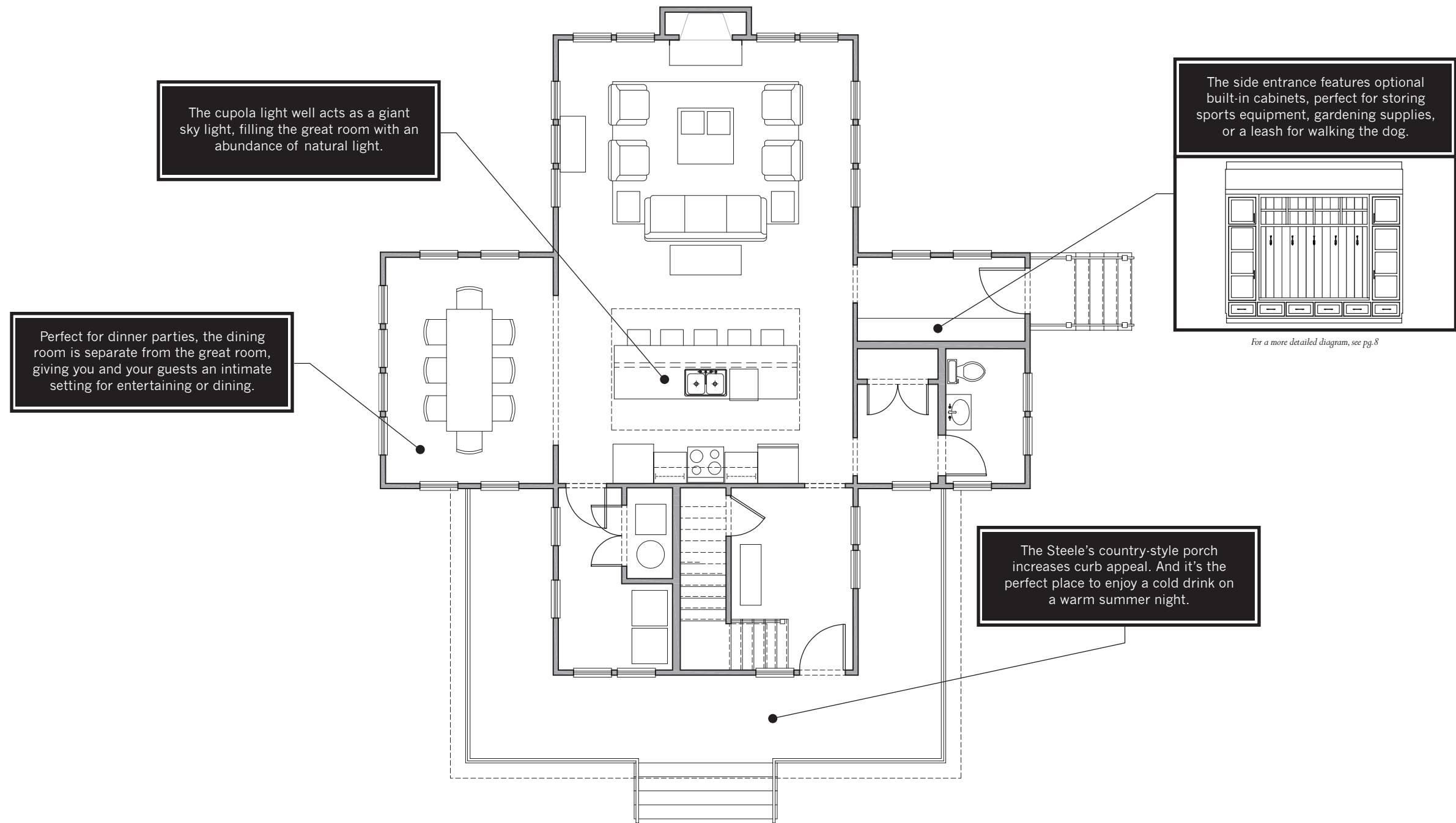


The STEELE 2200

*2,288 Total Square Feet
3 Bedrooms, 2½ Bathrooms*



The STEELE 2200

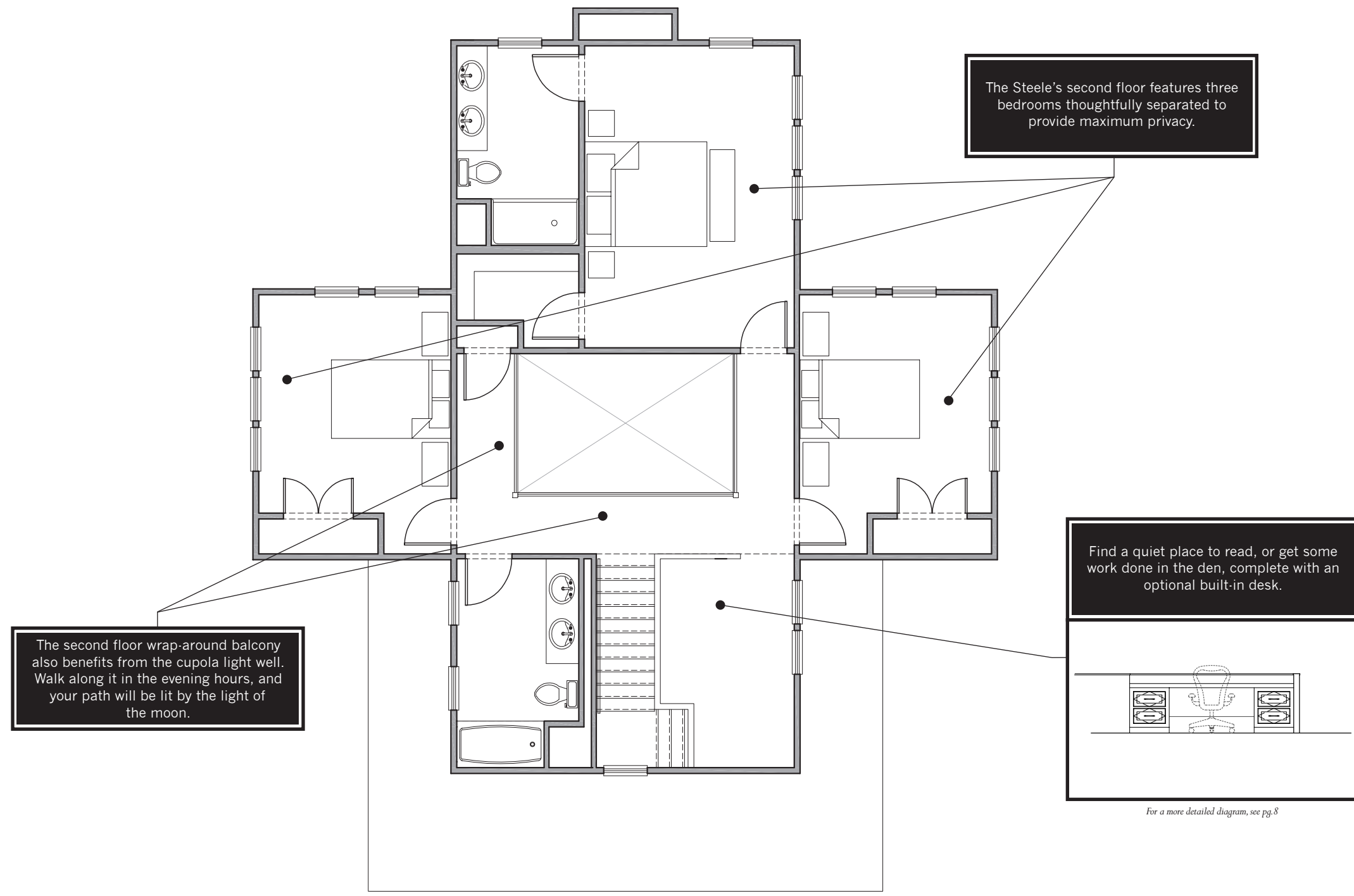


First Floor Plan – 1,216 SF

The interior of the Steele has many eye-catching features. In addition to over 30 windows on the first floor alone, a light well above the kitchen floods the first floor with plenty of natural light. Other impressive features include a grand fireplace, a large powder room, and ample storage space.

The Lakeside Village of Byron

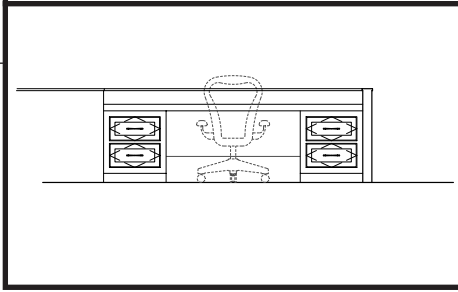
The STEELE 2200



The Steele's second floor features three bedrooms thoughtfully separated to provide maximum privacy.

The second floor wrap-around balcony also benefits from the cupola light well. Walk along it in the evening hours, and your path will be lit by the light of the moon.

Find a quiet place to read, or get some work done in the den, complete with an optional built-in desk.



For a more detailed diagram, see pg. 8

Second Floor Plan – 1,071 SF

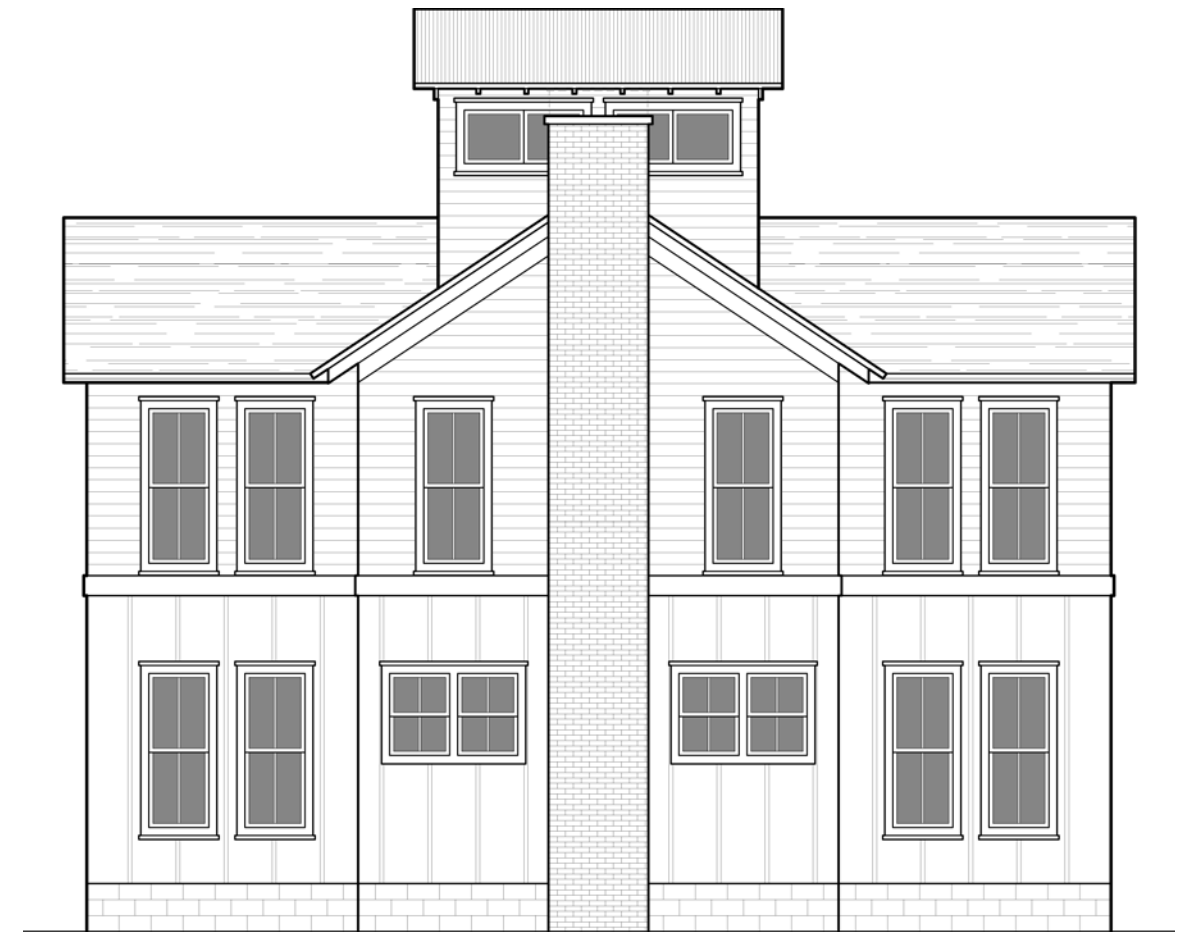
Walk up the staircase to the wrap-around balcony overlooking the great room, and again you experience the abundant natural light coming in through the cupola light well. Walk to either side of the balcony and find entrances to a master bedroom with a full bath, two additional bedrooms, and one additional full bath.

The Lakeside Village of Byron

The STEELE 2200



Front Elevation



Back Elevation

Exterior Elevation - Option #1

If country home design ever had a rebellious era, it would resemble the Steele. The classic farmhouse “cross” plan gets a modern update with numerous windows and triple-height spaces. The spacious layout allows for the majority of the rooms to have windows on multiple walls, resulting in great natural light throughout the day.

The Lakeside Village of Byron

The STEELE 2200



Right Elevation



Left Elevation

Exterior Elevation - Option #1

The Lakeside Village of Byron

The STEELE 2200



Front Elevation



Back Elevation

Exterior Elevation - Option #2

The Lakeside Village of Byron

The STEELE 2200



Right Elevation

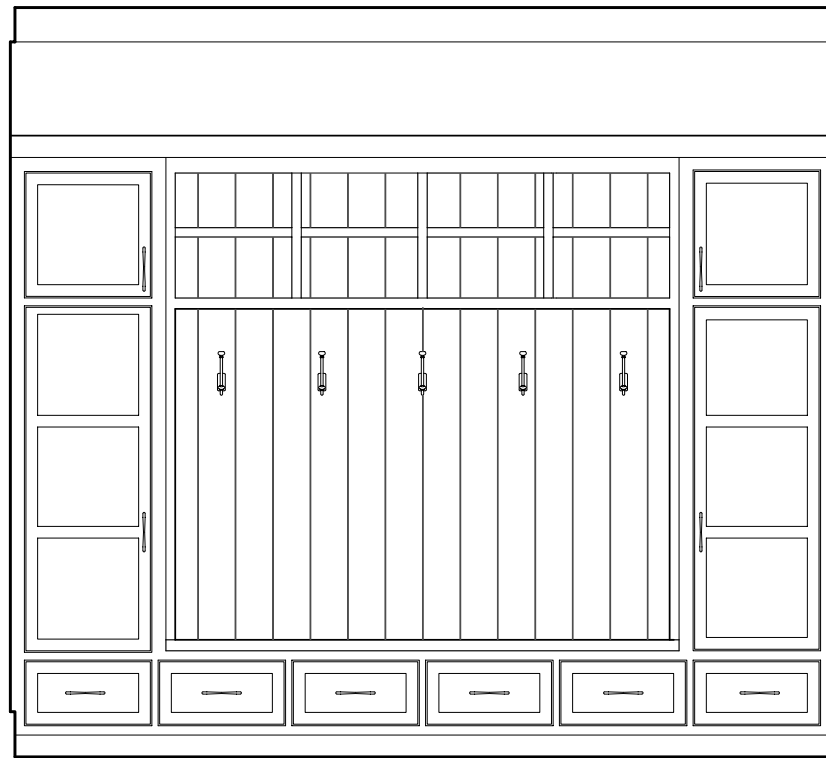


Left Elevation

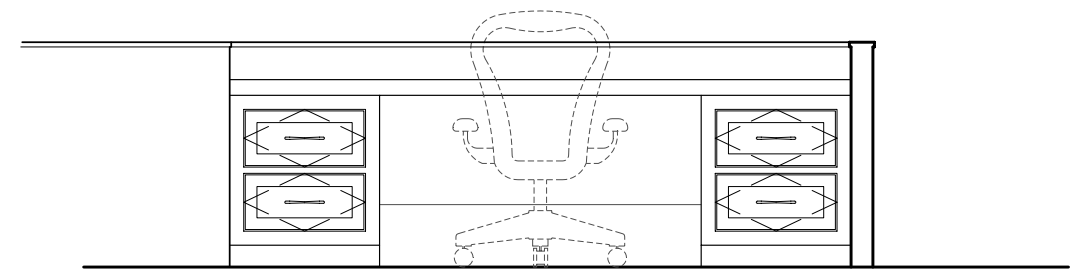
Exterior Elevation - Option #2

The Lakeside Village of Byron

The STEELE 2200



Rear Entry Built-In - Elevation



2nd Floor Built-In Desk - Elevation

The STEELE 2200



Fireplace & Cabinetry - Elevation

The Lakeside Village of Byron

DESIGN TEAM

Builder

Byron Extraordinary Place, LLC. – Indianapolis, IN

Architectural & Design Direction

Soucie Horner, Ltd. – Chicago, IL

Planning

David Oliver – Poundbury, England

Landscape Architecture

Catharina Malmberg – London, England



www.VillageofByron.com