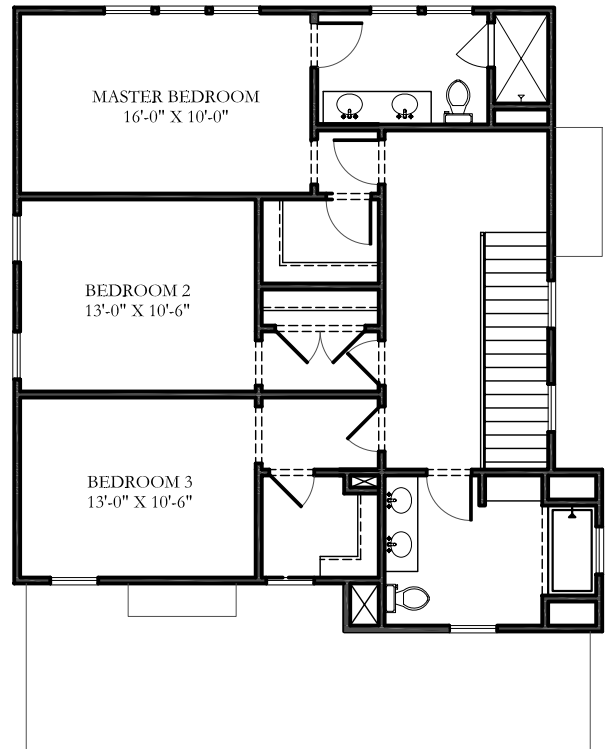
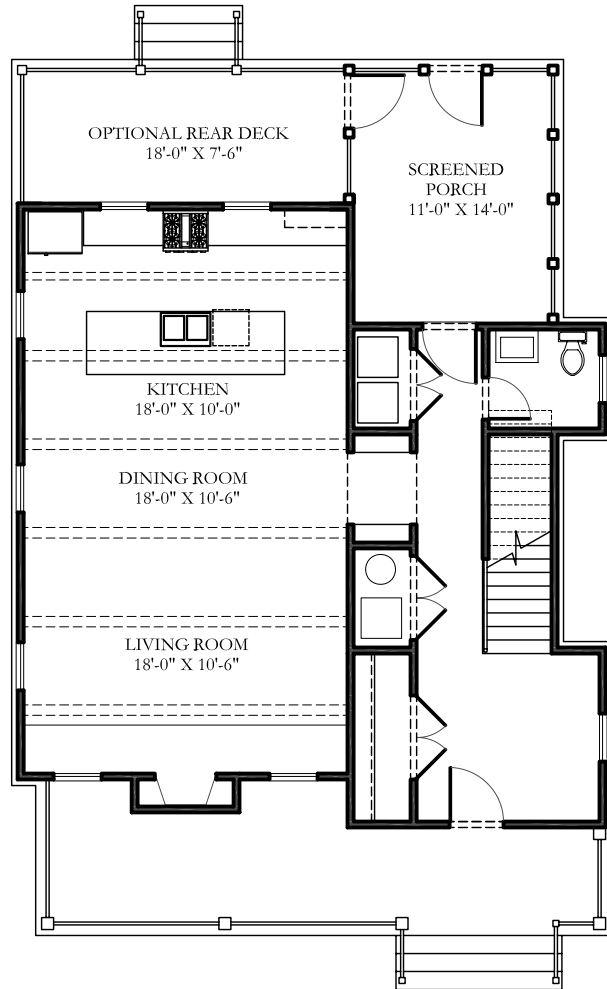


# PAWLEY 2101

1973 s.f.

Bedrooms: 3

Bathrooms: 2.5

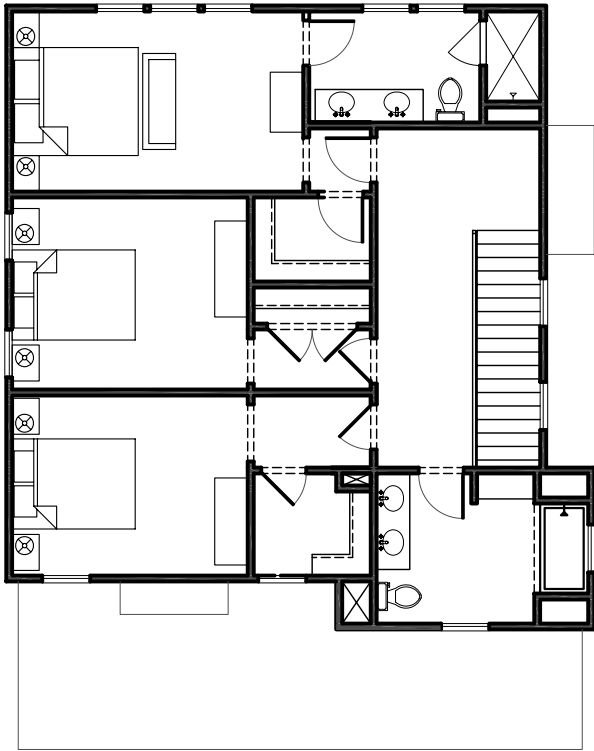
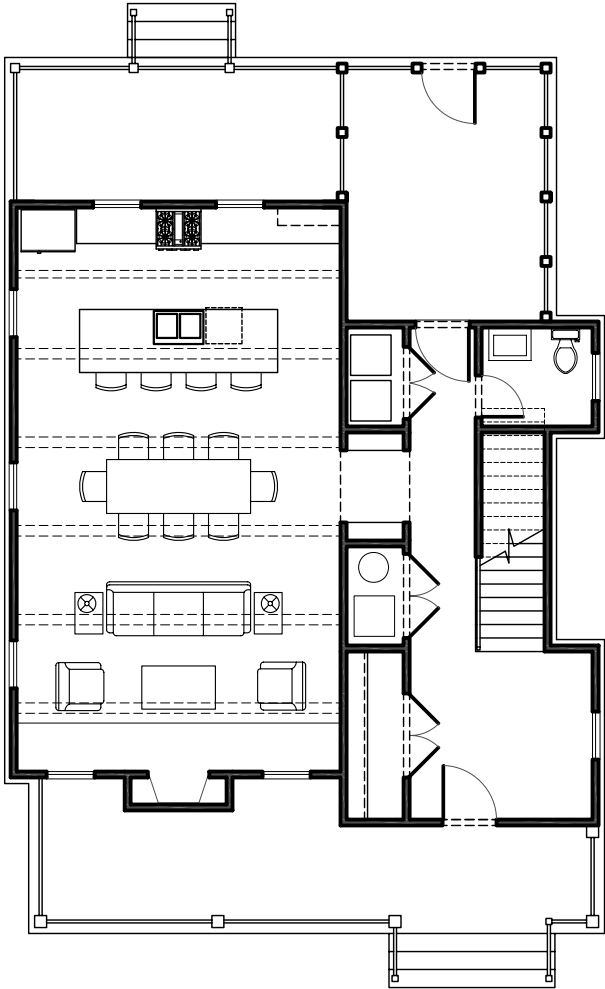


# PAWLEY 2101

1973 s.f.

Bedrooms: 3

Bathrooms: 2.5



**DESIGN TEAM**

**Builder**

*Byron Extraordinary Place, LLC. – Indianapolis, IN*

**Architectural & Design Direction**

*Soucie Horner, Ltd. – Chicago, IL*

**Planning**

*David Oliver – Poundbury, England*

**Landscape Architecture**

*Catharina Malmberg – London, England*



[www.VillageofByron.com](http://www.VillageofByron.com)