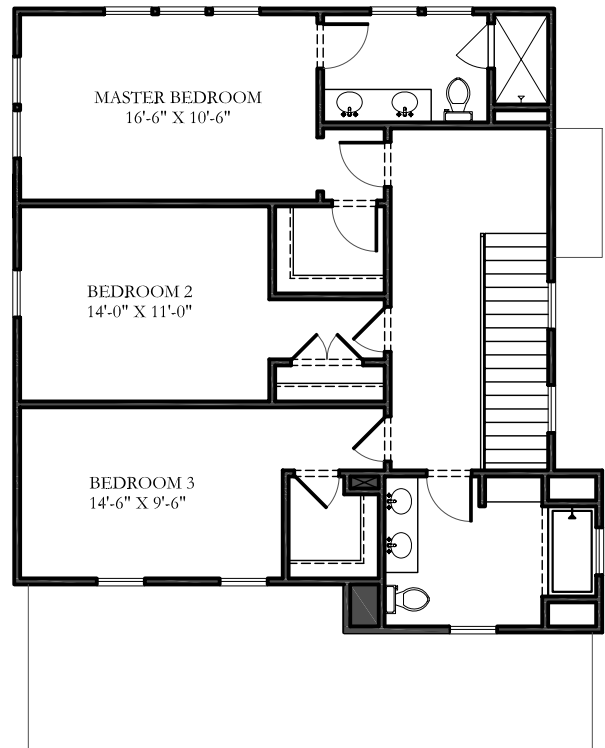
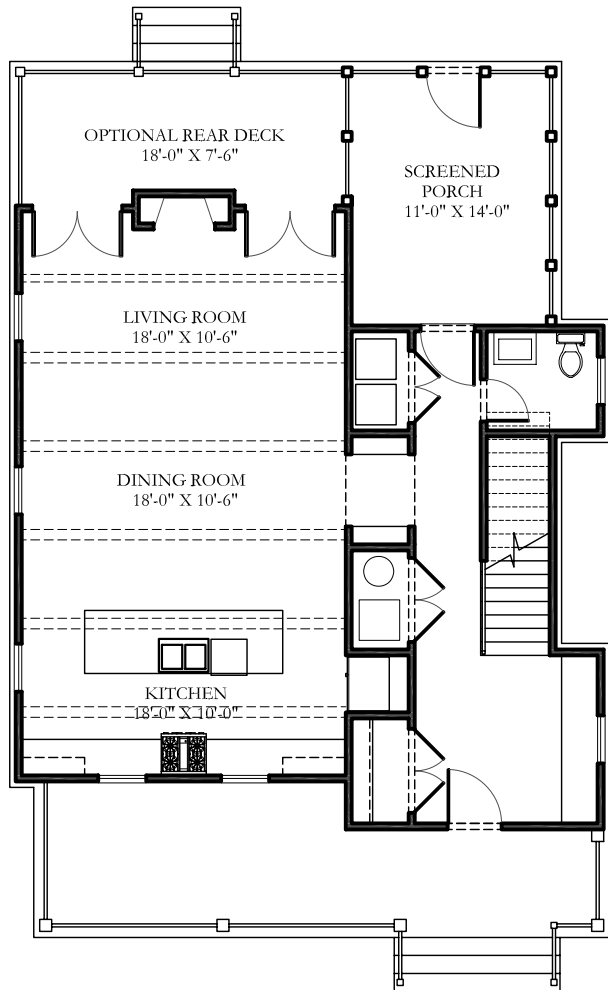


PAWLEY 2100

1973 s.f.

Bedrooms: 3

Bathrooms: 2.5

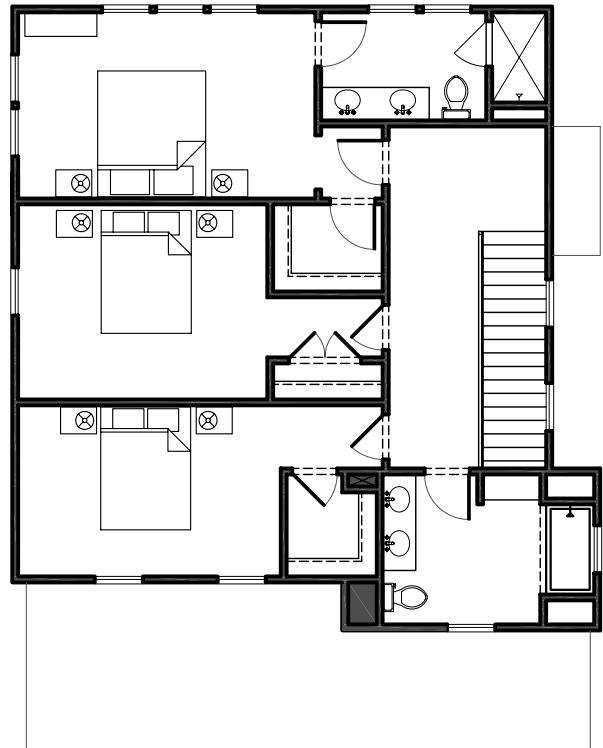
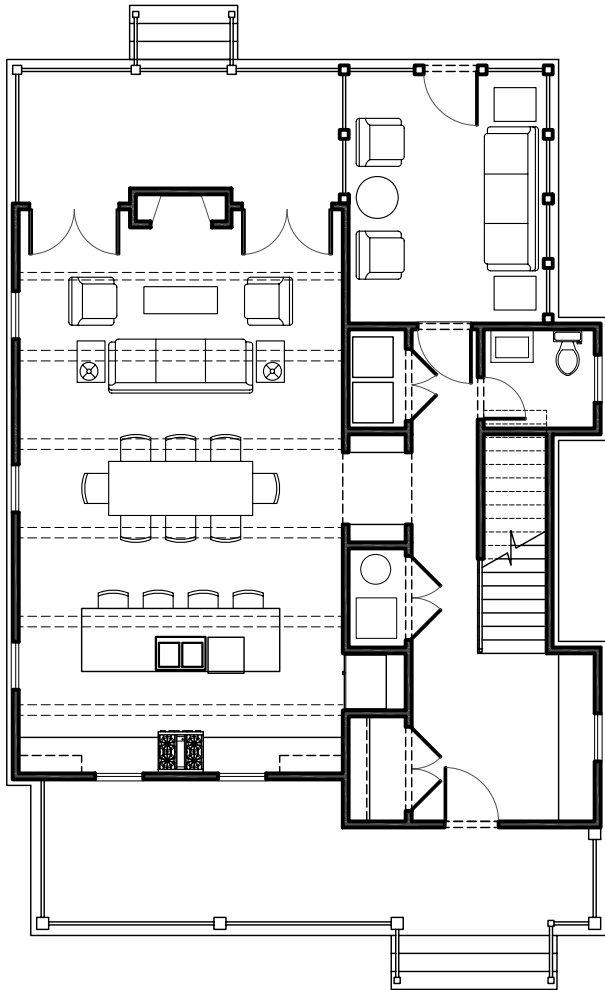


PAWLEY 2100

1973 s.f.

Bedrooms: 3

Bathrooms: 2.5



DESIGN TEAM

Builder

Byron Extraordinary Place, LLC. – Indianapolis, IN

Architectural & Design Direction

Soucie Horner, Ltd. – Chicago, IL

Planning

David Oliver – Poundbury, England

Landscape Architecture

Catharina Malmberg – London, England



www.VillageofByron.com