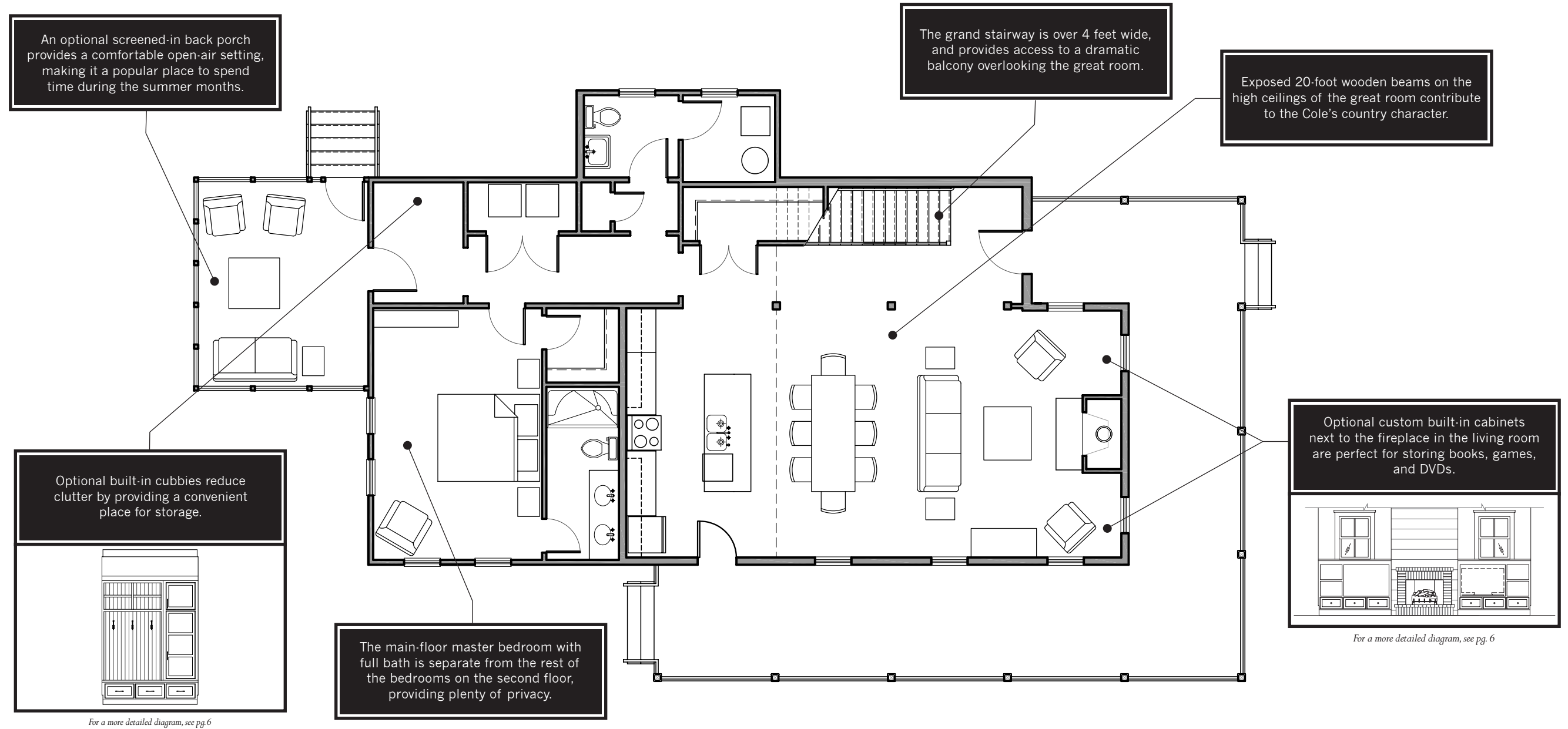


The COLE 2200

*2,252 Total Square Feet
3 Bedrooms, 3½ Bathrooms*



The COLE 2200



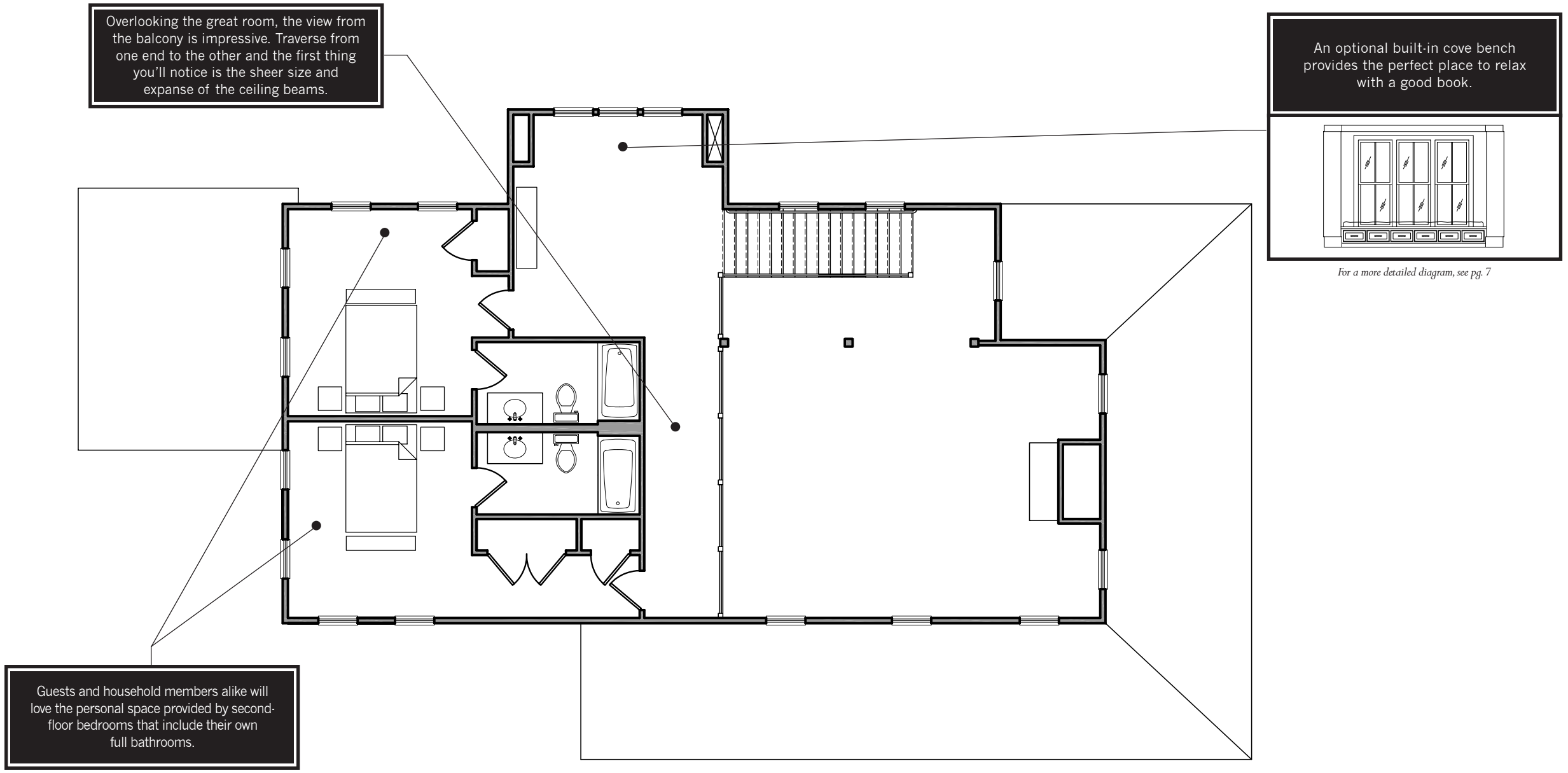
First Floor Plan – 1,421 SF

The appeal of the Cole's expansive front porch isn't easy to leave behind, but when you do, its immense great room will reward you with an atmosphere you'll never forget. Dramatic high ceilings with support beams that stretch from floor to ceiling and a large fireplace all define a grand living space, perfect for

festive holidays and large family gatherings. Located on the first floor, a master bedroom with a full bath is separate from the rest of the bedrooms on the second floor, providing both privacy and easy access to the main living area.

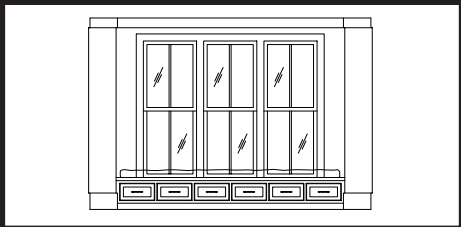
The Lakeside Village of Byron

The COLE 2200



Overlooking the great room, the view from the balcony is impressive. Traverse from one end to the other and the first thing you'll notice is the sheer size and expanse of the ceiling beams.

An optional built-in cove bench provides the perfect place to relax with a good book.



For a more detailed diagram, see pg. 7

Guests and household members alike will love the personal space provided by second-floor bedrooms that include their own full bathrooms.

Second Floor Plan – 830 SF

At the top of the grand staircase is a reading lounge that is both spacious and comfortable. Just to the left is a balcony that provides an impressive view of the great room. Accessible from either side of the balcony are two additional bedrooms, both offering full baths, making them ideal for mature members of the family and out-of-town guests.

The Lakeside Village of Byron

The COLE 2200



Front Elevation



Back Elevation

Exterior Elevation

“This home is incredible.” “I’ve never seen anything like it.” It takes a truly special type of home to elicit comments like this, and the Cole is that type of home. Its blend of traditional design with modern touches inspires in many

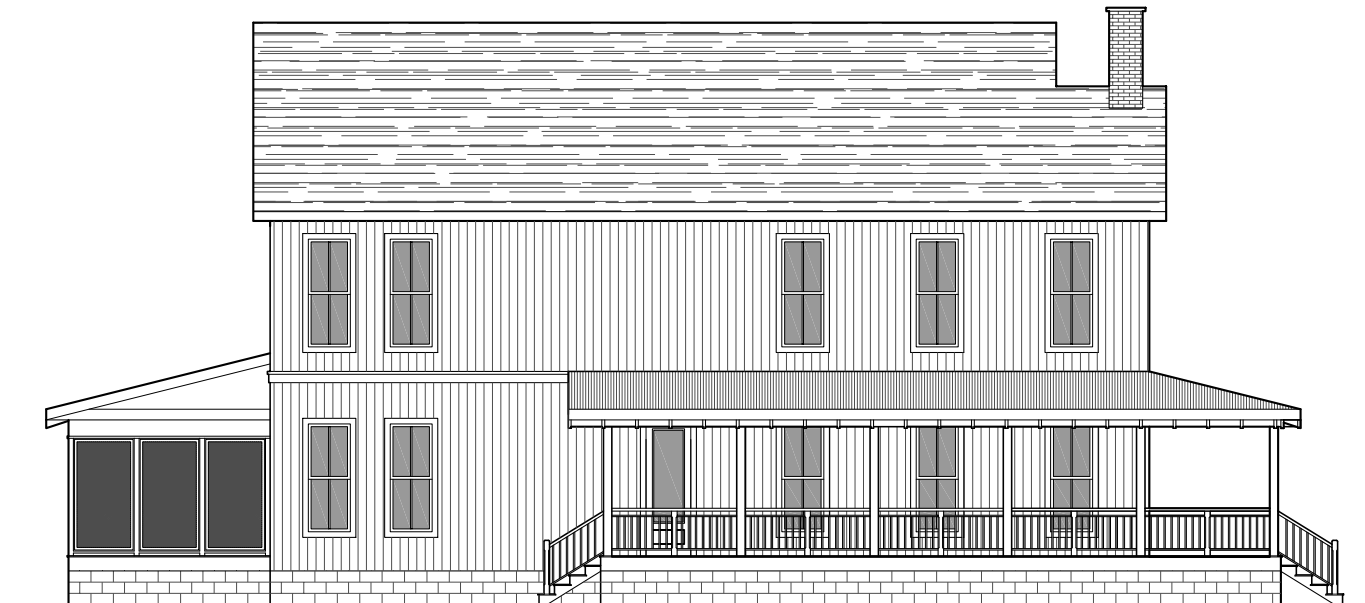
ways. If we had to give it another name we would call it the Prairie Mansion. Except to live here, you don’t have to be a millionaire.

The Lakeside Village of Byron

The COLE 2200

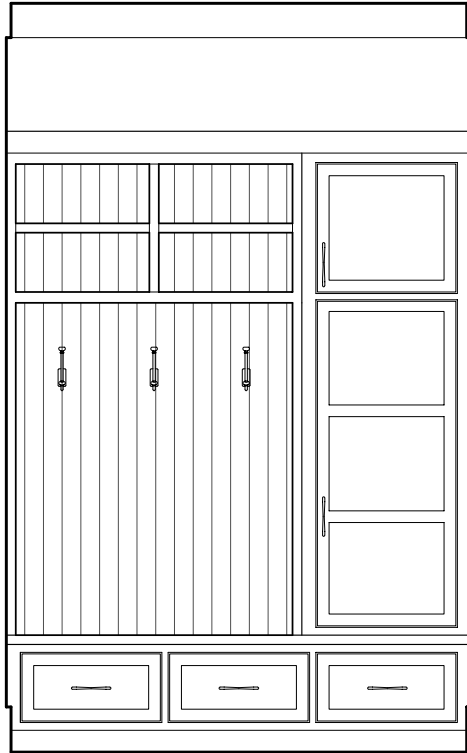


Right Elevation



Left Elevation

The COLE 2200

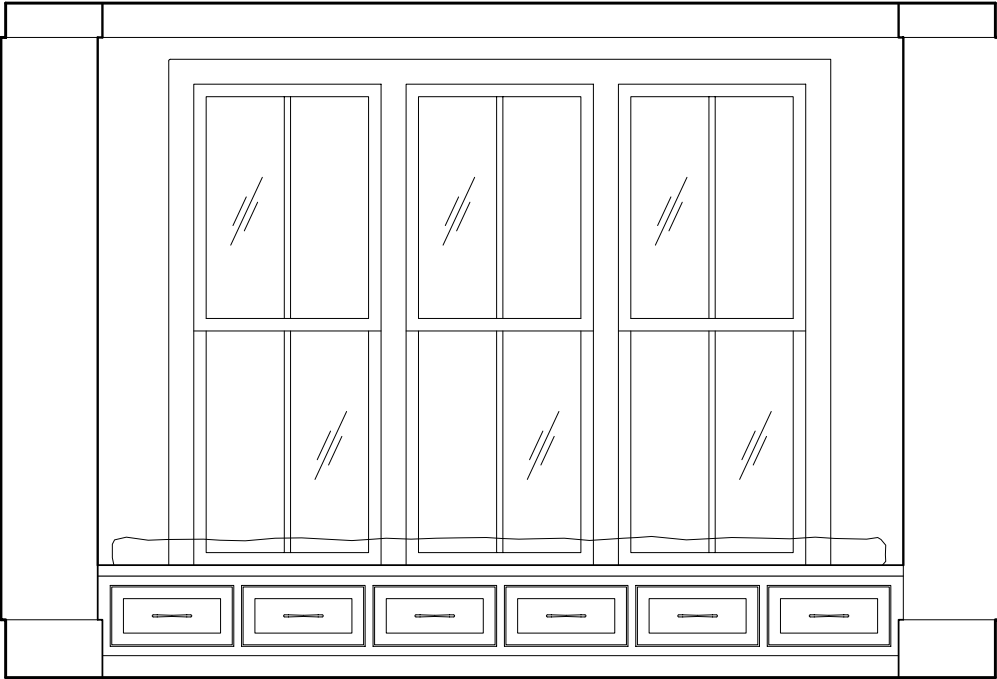


Rear Entry Built-In - Elevation



Fireplace & Cabinetry - Elevation

The COLE 2200



Cove Bench - Elevation

The Lakeside Village of Byron

DESIGN TEAM

Builder

Byron Extraordinary Place, LLC. – Indianapolis, IN

Architectural & Design Direction

Soucie Horner, Ltd. – Chicago, IL

Planning

David Oliver – Poundbury, England

Landscape Architecture

Catharina Malmberg – London, England



www.VillageofByron.com